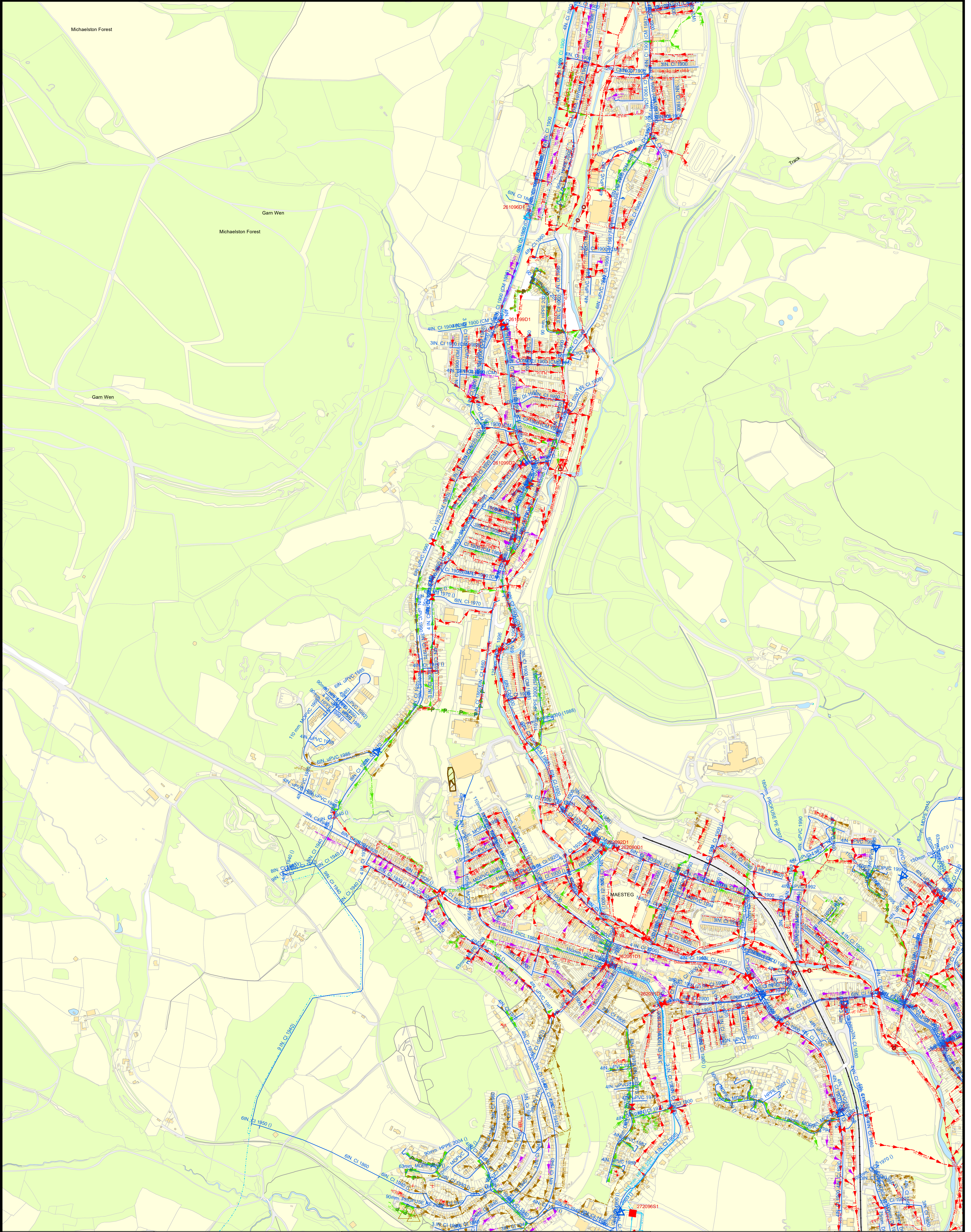



Appendix 10A

Local Sewer Network





LEGEND(Representative of most common features)

Sluice Valve

Air Valve SINGLE

Tap

Pressure Reducing Valve

Meter

Bulk Meter

Fire Hydrant

Cap

Non Dwr Cymru

Existing Distribution Main

Gravity Sewer

Rising Main

Outfall

Pumping Station

Lamphole

Combined Sewer Overflow

Special Purpose Chamber

Treatment Works

Private Sewer Transfer

Lateral Drain

Inspection Chamber

NB: Sewer symbol colour indicates the sewer type.
RED - Combined
GREEN - Surface Water
BROWN - Foul

Notes:

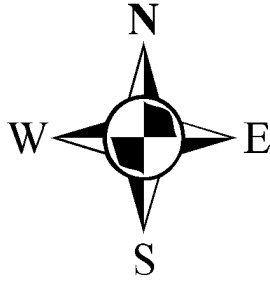
Whilst every reasonable effort has been taken to correctly record the pipe material of DCWW assets, there is a possibility that in some cases pipe material (other than Asbestos Cement or Pitch Fibre) may be found to be asbestos cement (AC) or Pitch Fibre (PF). It is therefore advisable that the possible presence of AC or PF pipes be anticipated and considered as part of any risk assessment prior to excavation

Dŵr Cymru Cyfyngedig (the Company) gives this information as to the position of its underground apparatus by way of general guidance only and on the strict understanding that it is based on the best information available and no warranty as to its correctness is relied upon in the event of excavations or other works made in the vicinity of the company's apparatus. The onus of locating apparatus before carrying out any excavations rests entirely on you. The information which is supplied by the Company is done so in accordance with statutory requirements of sections 198 and 199 of the Water Industry Act 1991 which is based upon the best information available and, in particular, but without prejudice to the generality of the foregoing, it should be noted that the records that are available to the Company may not disclose the existence of a water main, service pipe, sewer, lateral drain or disposal main and any associated apparatus laid before 1 September 1989, or, if they do, the particulars thereof including their position underground may not be accurate. It must be understood that the furnishing of this information is entirely without prejudice to the provision of the New Roads and Street Works Act 1991 and the Company's right to be compensated for any damage to its apparatus.

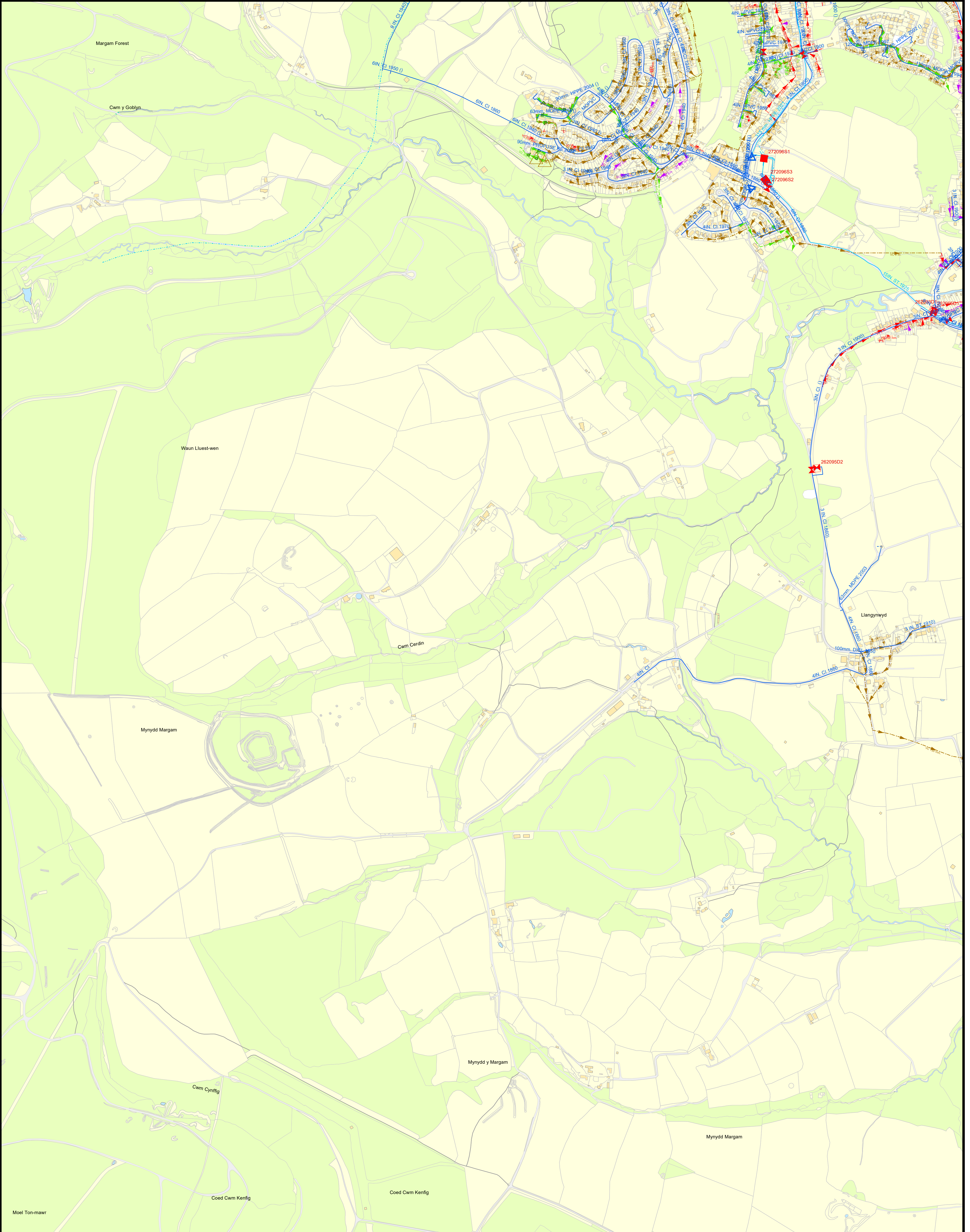
Service pipes are not generally shown but their presence should be anticipated.

**EXACT LOCATIONS OF ALL APPARATUS
TO BE DETERMINED ON SITE.**

Reproduced by permission of the Ordnance Survey on behalf of
HMSO. © Crown copyright and database right 2017.
All rights reserved.
Ordnance Survey Licence number 100019534



Map Ref: 284947,192078
Map scale: 1:5000
Printed by: Gethin Jones
Printed on: 29/01/2025



LEGEND(Representative of most common features)	
	Sluice Valve
	Air Valve SINGLE
	Tap
	Pressure Reducing Valve
	Meter
	Bulk Meter
	Fire Hydrant
	Cap
	Non Dwr Cymru
	Existing Distribution Main
	Gravity Sewer
	Rising Main
	Outfall
	Pumping Station
	Lamphole
	Combined Sewer Overflow
	Special Purpose Chamber
	Treatment Works
	Private Sewer Transfer
	Lateral Drain
	Inspection Chamber

NB: Sewer symbol colour indicates the sewer type.
RED - Combined
GREEN - Surface Water
BROWN - Foul

Notes:

Whilst every reasonable effort has been taken to correctly record the pipe material of DCWW assets, there is a possibility that in some cases pipe material (other than Asbestos Cement or Pitch Fibre) may be found to be asbestos cement (AC) or Pitch Fibre (PF). It is therefore advisable that the possible presence of AC or PF pipes be anticipated and considered as part of any risk assessment prior to excavation

Dŵr Cymru Cyfyngedig ('the Company') gives this information as to the position of its underground apparatus by way of general guidance only and on the strict understanding that it is based on the best information available and no warranty as to its correctness is relied upon in the event of excavations or other works made in the vicinity of the company's apparatus. The onus of locating apparatus before carrying out any excavations rests entirely on you. The information which is supplied by the Company is done so in accordance with statutory requirements of sections 198 and 199 of the Water Industry Act 1991 which is based upon the best information available and, in particular, but without prejudice to the generality of the foregoing, it should be noted that the records that are available to the Company may not disclose the existence of a water main, service pipe, sewer, lateral drain or disposal main and any associated apparatus laid before 1 September 1989, or, if they do, the particulars thereof including their position underground may not be accurate. It must be understood that the furnishing of this information is entirely without prejudice to the provision of the New Roads and Street Works Act 1991 and the Company's right to be compensated for any damage to its apparatus.

Service pipes are not generally shown but their presence should be anticipated.

**EXACT LOCATIONS OF ALL APPARATUS
TO BE DETERMINED ON SITE.**

Reproduced by permission of the Ordnance Survey on behalf of
HMSO. © Crown copyright and database right 2017.
All rights reserved.
Ordnance Survey Licence number 100019534

Map Ref: 284557,188952
Map scale: 1:5000
Printed by: Gethin Jones
Printed on: 29/01/2025