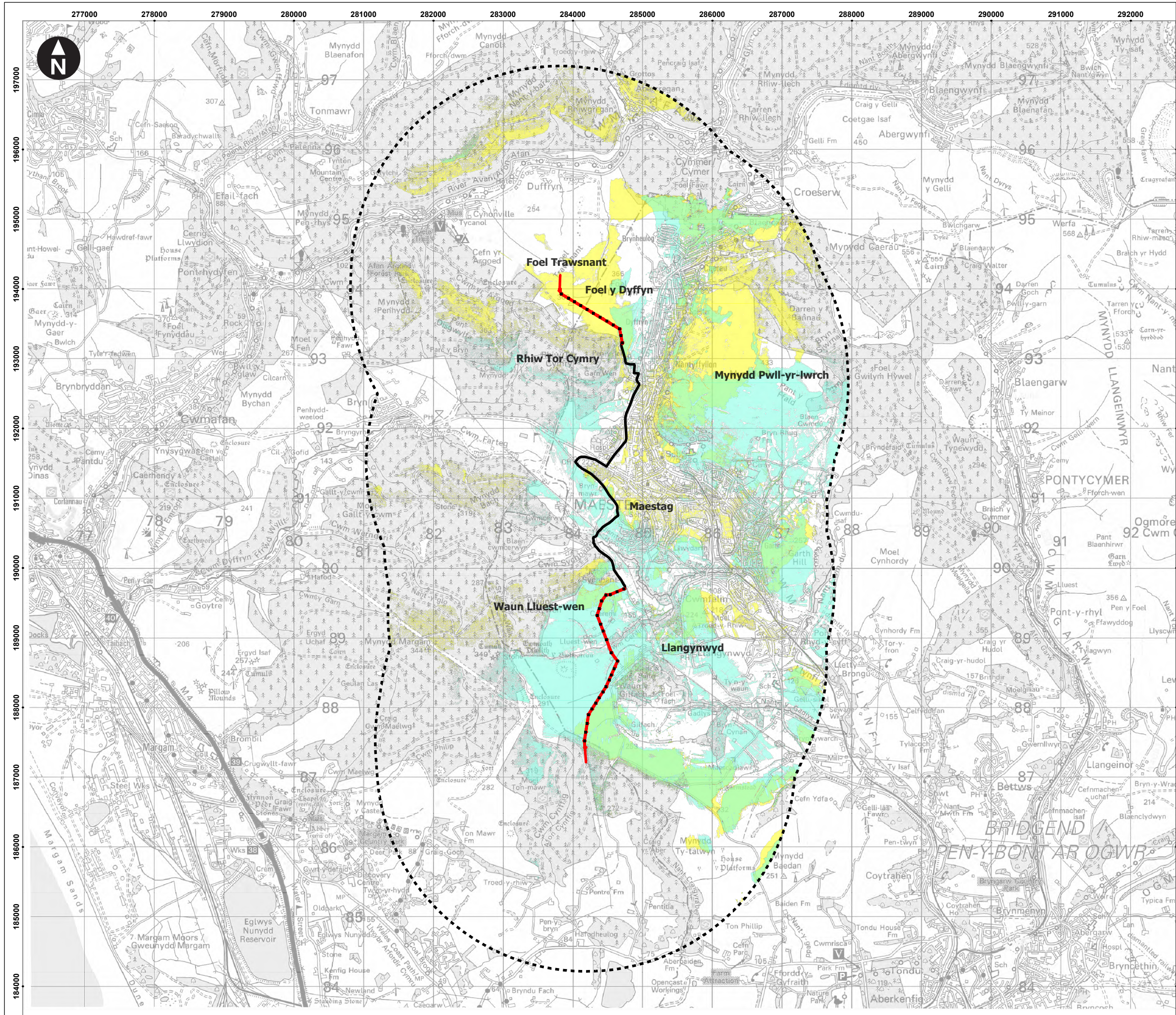


\\corp\global\GB\Projects\UK0037xxx\UK0037904.7662 - Foel Trawsnant Connection\03 WIP\GIS\02_APRX\UK0037804_FoelTrawsnant_0021.aprx Originator: UKTHS775



Key

- Overhead line
- Underground cables
- OHL Grid connection poles
- 3km Study area
- Areas where 66kV poles (northern section) only are theoretically visible
- Areas where 66kV poles (southern section) only are theoretically visible
- Areas where 66kV poles (in both northern and southern sections) are theoretically visible

This drawing was based on a computer generated Zone of Theoretical Visibility (ZTV). The areas shown indicate the maximum theoretical visibility of the proposed OHL grid connection poles using 1m Digital Surface Model (DSM) LiDAR. The ZTV includes an adjustment that allows for the curvature and light refraction of the Earth. The ZTV also accounts for the visibility screening effects of buildings and vegetation.

The ZTV was generated using OHL grid connection pole heights varying between 12-15m (ABGL), using a viewer height of 1.6m.

0 0.75 1.5 2.25 3 km
Scale at A3: 1:52,500

© Crown copyright and database rights 2025 Ordnance Survey
AC0000808122